

Toronto Blues Society MAPLEBLUES

TBS is a charitable organization dedicated to the promotion and preservation of the Blues



April 2020

www.torontobluesociety.com

Published by the TORONTO BLUES SOCIETY

since 1985

info@torontobluesociety.com

Vol 36, No 4



Sass Jordan
Loose Blues News
John's Blues Picks

Top Blues
Event Listings
and More

CANADIAN PUBLICATIONS MAIL AGREEMENT #40011871

TORONTO BLUES SOCIETY

910 Queen St. W. Ste. B04 Toronto, Canada M6J 1G6
Tel. (416) 538-3885 Toll-free 1-866-871-9457

Email: info@torontobluesociety.com
Website: www.torontobluesociety.com

MapleBlues is published monthly by the Toronto
Blues Society ISSN 0827-0597

2020 BOARD OF DIRECTORS

Derek Andrews (President), **Janet Alilovic**,
Jon Arnold, **Ron Clarkin** (Treasurer),
Lucie Dufault (Vice-President), **Carol Flett**
(Secretary), **Sarah French**, **Michele Gare**,
Lori Murray, **Ed Parsons**, **Jordan Safer**, **Paul**
Sanderson, **Mike Smith**, **John Valenteyn**
(Executive)

Musicians Advisory Council: **Brian Blain**,
Gary Kendall, **Lily Sazz**, **Mark Stafford**,
Jenie Thai, **Suzie Vinnick**, **Ken Whiteley**
Volunteer & Membership Committee: **Lucie**
Dufault, **Sarah French**, **Rose Ker**, **Mike**
Smith, **Ed Parsons**, **Carol Flett**

Grants Officer: **Barbara Isherwood**

Marketing & Social Media Coordinator:
Dan McKinnon

Publisher/Editor-in-Chief: **Derek Andrews**

Managing Editor: **Brian Blain**
editor@torontobluesociety.com

Contributing Editors: **John Valenteyn**, **Janet**
Alilovic, **Hüma Üster**, **Carol Flett**

Listings Coordinator: **Janet Alilovic**

Mailing and Distribution: **Ed Parsons**

Advertising: **Dougal Bichan**
tbsads@dougalco.com

For ad rates & specs call 416-645-0295
www.torontobluesociety.com/newsletters/rate-card

Charitable # 87487 7509 RR0001

The Toronto Blues Society acknowledges the
annual support of the following agencies:



ONTARIO ARTS COUNCIL
CONSEIL DES ARTS DE L'ONTARIO
an Ontario government agency
un organisme du gouvernement de l'Ontario



FUNDED BY
THE CITY OF
TORONTO



Canadian Heritage
Patrimoine canadien

Project support is provided by:

FACTOR Canada

We acknowledge the financial support of FACTOR,
the Government of Canada and of Canada's private radio broadcasters.
Nous remercions l'appui financier de FACTOR, du gouvernement
du Canada, et des radiodiffuseurs privés du Canada.

FOUNDATION

SOCAN
FOUNDATION



ONTARIO
CREATES

SOCAN



Canada Council
for the Arts
Conseil des arts
du Canada

Attention TBS Members!

Due to COVID-19 pandemic, TBS is unable to deliver a physical copy of the MapleBlues April issue. While we are working from home like every other organization, we are hoping to catch up with expiring, new & renewing members in May. Hence new & renewing members will be receiving their new membership cards as soon as our operations go back to our regular work hours. Please e-mail info@torontobluesociety.com if you have any questions and be sure to follow TBS accounts on social media for immediate updates.

MARK YOUR CALENDAR

June 20 - 35th Anniversary Concert, we look forward to working with the TD Toronto Jazz Festival! THIS JUST IN: Jazz Festival will be moving to later this summer. Details to be announced!

June 27 - TBS Talent Search, as part of the Jazz Festival, Mainstage in Village of Yorkville Park, 2pm-6pm

July 17 - Harbourfront Centre Main Stage 35th Anniversary Concert, with Harrison Kennedy and more to be announced!

July 19 - Harbourfront Centre Emerging Blues Spotlight" led by blues legend and bandleader Terry Wilkins

November 20, 2020 - 34th Women's Blues Revue, Roy Thomson Hall - Tickets on sale now!

January 29-February 1, 2021 - Blues Summit 10 - Registration, Showcase Applications, Location to be announced.

Online Performances

Thurs April 2 9pm: Ken Whiteley performs on the Home Routes / Chemin Chez Nous live stream National Online Folk Festival at www.Facebook.com/homeroutes.

Thurs April 2 8pm: Tedeschi Trucks Band - Swamp TV, free streaming of full concerts from their archive, starting at 8PM every Thursday! www.tedeschitrucksband.com

National Arts Centre's #CanadaPerform live stream Facebook concerts daily

Miss Emily presents a video performance every Monday at www.facebook.com/themissemilymusic. Originals, Covers, Requests

Brian Blain streams his weekly Blaincast every Sunday at 2pm on his Facebook page.

Blues On The Rideau at The Cove Inn featuring Miss Emily will be online on artist's Facebook page on April 17.

Blues On The Rideau at The Cove Inn featuring David Vest will be online on artist's Facebook page on May 8

JW-Jones is doing "30 Riffs in 30 Days" on his Facebook page. Every day at 9am EST, a new riff will be ready for the followers.

Glenn Marais will be live streaming every night at 8pm on his Facebook page.

The Toronto Blues Society is a member of



The Blues Foundation
MEMBER

The Toronto Blues Society is committed to the principles of the Personal Protection and Electronic Documents Act (PIPEDA) in safeguarding the collection, use, and disclosure of personal information.

CANADIAN PUBLICATIONS MAIL AGREEMENT #40011871

Return undeliverable Canadian addresses to:

Toronto Blues Society, 910 Queen St. W. Ste. B04, Toronto, Canada M6J 1G6

Email: info@torontobluesociety.com

Notes & Quotes Sass Jordan

In a world currently focused on the covid-19 pandemic, it was a breath of fresh air to delve into an easy conversation with an artist who has managed to successfully navigate the commercial music scene for decades. With a JUNO and Billboard win for Best Female Rock Vocalist, and over one million albums sold worldwide, Sass Jordan has proven to be an enduring artist whose music remains timeless. She's also done a lot beyond the parameters of being a bonafide rock star; she's done everything from being a judge on every season of Canadian Idol (Sass served as the only female judge for all six seasons) to the Vagina Monologues. She's even performed in the off-Broadway show *Janis*, her list of skills and accomplishments is wide-ranging. For this edition of Notes & Quotes, Sass Jordan talks about where the journey has led her now: to a full-length album comprised entirely of Blues.

Sass Jordan, born in the UK and raised in Montreal, Canada, made a grand entrance in the music scene nationally with the hit single "Tell Somebody" in 1988 (Atlantic Records). Immediately, she snagged that JUNO for Most Promising Female Rock Vocalist. She has been nominated for three more JUNO awards over the years, along with other accolades. She's even been named an honorary colonel, so it's safe to say that Sass Jordan has earned her way to recognition beyond the sphere of music. Jordan's influences can be heard in her approach (Steven Tyler and Robert Palmer, to name a couple), yet she herself has become an influencer.

Jordan's latest release *Rebel Moon Blues* (March 13, 2020, Stony Plain Records) features 8 songs. Seven songs are select covers (featuring artists ranging from Elmore James to Gary Moore) and one is an original, "The



Key." The album seems like a natural arrival for Sass Jordan – the Blues is laden in most of her catalogue, scattered in guitar riffs and infused in her distinctive vocals. When discussing that inherent thread, and whether more Blues music could be the natural progression in her future career aspirations, Jordan offered;

"Yeah, I would say its definite. At this point in time, it's the most positive and plentiful feedback I've had from the public in years. There is a great infrastructure to promote with the record company I'm with now, and that allows me to take the opportunity I've been leaning towards."

Jordan also sat in the producer's chair, serving as co-producer on *Rebel Moon Blues*. When asked about that part of the process, she states;

"When it's your record, you're pretty much always a co-producer, aren't you? I'm more of a producer on the musicality level of things than the technical aspect. I'll be the one who listens to what works on a music level – can I live with that vocal not being absolutely perfect because I really felt it and it shows? I like to take the approach that gets to the best version of each song. That's what I'm looking for when I'm co-producer."

One thing of note is that Sass Jordan made

sure to stay true to the originals with respect to lyrics. She has been quoted as saying;

"To me, what makes these songs fresh, besides our energy, is that it's a female doing traditionally male stuff. And I sing the lyrics the way it was written... I find that not messing with the gender is particularly relevant in today's climate. It's great that we can get away with doing that now."

Jordan was asked if she had any advice to give to aspiring artists, she offered it authentically and easily;

"I can't really give advice, because that's so self-driven. What happens with me, and what worked with me, can not ever happen or work with anyone else because we are all different. What worked for someone else could have never worked for me. Do it for yourself."

Sass Jordan is slated to tour in support of *Rebel Moon Blues*, with dates scheduled to start June 1st, 2020, according to the official website. As the covid-19 pandemic evolves, please check for changes to Sass' tour schedule. For more information on Sass Jordan, her tour dates, or *Rebel Moon Blues*, visit www.sassjordan.com.

Erin McCallum

Singer, songwriter, performing artist

TORONTO BLUES SOCIETY

TALENT SEARCH

ARE YOU THE NEXT
BLUES BUZZ ACT?

2020

Applications open on March 1st until May 1st!

torontobluesociety.com/tbs-talent-search-2020/

GET BEHIND THE BLUES BECOME A MEMBER TODAY!

Helps support our Blues community & TBS events.
Torontobluesociety.com / 416-538-3855 / Toll free 1-866-871-9457

JOIN US AND GET THESE AMAZING BENEFITS!

- Home delivery of our monthly Maple Blues Newsletter
- 25% discount on Maple Blues Awards tickets, 20% discount on Women's Blues Revue tickets & exclusive early bird ticket access
- Savings on Advance Tickets to shows at Music by the Bay Live
- 10% off every purchase from Dead Dog Records & Kops Records
- Discount tickets to all TBS events & merchandise
- Exclusive access to industry discounts, ticket giveaways, and more!
- TBS voting rights for Charter Members

MEMBERSHIP OPTIONS

CHARTER – 1 YEAR \$50/ 2 YEARS \$95/ 3 YEARS \$135
BENEFITS LISTED ABOVE

FAMILY – 1 YEAR \$70/ 2 YEARS \$135/ 3 YEARS \$195
BENEFITS LISTED ABOVE; MAX 2 ADULTS & 2 CHILDREN -19

INSTITUTIONAL OR BENEFACTOR – \$125/YEAR
ALL BENEFITS + DISCOUNTED ADVERTISING IN THE NEWSLETTER

STUDENT – \$20/YEAR
BENEFITS LISTED ABOVE

GENERAL – \$35/YEAR
MAPLE BLUES NEWSLETTER ONLY



Renewing Members: Al Lerman, Alec Fraser, Big Dave McLean, Brooke Blackburn, Carlos del Junco, Carol Flett, Dawn Tyler Watson, Diana Braithwaite, Duane Blackburn, Ed Parsons, Elizabeth & Ron Sellwood, Emily Burgess, Gabriel Dube, Gail Brodrick, Howard Moore, Jani Lauzon, Jeff Bradshaw, Jim Casson, John Shortill, John Knox, John Forde, Johnny Max, Lance Anderson, Lily Sazz, Lori Murray, Lorraine Fuller, Martin Gabber, Martin Tuori, Michael Jerome Browne, Paolo Chiochio, Pat Carey, Pat World, Paul Willis, Rick Wilson, Solomon Weinstock, Steven Doede, Teddy Leonard, Tim Johnston, Wayne Cassidy, William Sheffield

New Members: Judel Dimerman, Jim Diamond

Many thanks to Sharole Gabriel, Tom McQuade, Marie Pearce, Gerry Turrin, Geoff Virag, Lynn Wintercom and Louie Simone for their help with the Newsletter mailing.

2019 Maple Blues Award Winner

- *New Artist of the Year*
- *Female Vocalist of the Year*
- *Sapphire Video Award*



**JOIN ME EVERY
MONDAY FOR
A NEW VIDEO
PERFORMANCE!**

**ORIGINALS,
COVERS,
REQUESTS!**

♥ Miss EMILY

www.facebook.com/themissemilymusic



Musicians Take Note: The Toronto Arts Foundation and Toronto Arts Council launched their TOArtist Covid-19 Response Fund yesterday which is an emergency support program that will help Toronto artists who have lost income as a result of COVID-19 arts cancellations. Major donors and partners have generously kick-started the campaign with collective contributions to date of over \$500,000 - enough to provide grants for more than 500 artists. Every additional dollar will increase the number of artists supported.

Qualifying artists will each receive up to \$1,000 and can apply until April 30th through a simplified online application portal. The first grants will go out by mid-April. Applications at www.torontoartscouncil.org/grant-programs/toartist-covid-response-fund

Ontario Presents is making their conferencing service available free of charge to any Ontario-based artist, agent, presenter, or other arts presenting industry professional who has a need to host an online or phone meeting and does not have the means to do so. If you are interested in using this service to host a meeting, please contact natalie@ontariopresents.ca

Folk Awards: The 2020 Canadian Folk Music Awards (CFMAs) are moving their Awards celebration online this year, and will present all 20 Awards virtually, on Saturday, April 4 at 7pm EST via their facebook page and website. The Awards were originally scheduled for the weekend of April 3-4 in Charlottetown, PEI, however, it is now cancelled due to COVID-19.

Blues Foundation Announcement: Blues Foundation President & CEO, Barbara Newman, has made the decision to retire and will leave her position with The Blues Foundation effective September 30, 2020. Board Chairman Michael Freeman writes, "our Executive Committee and Board of Directors are now hard at work to determine next steps to find her replacement. She has offered full support to board leadership to assist with a search and transition plan, and I am confident that she will give her all to ensure the success of our next leader."

Please be assured that the current plans to produce a virtual Blues Music Awards show are proceeding on schedule, and Barbara will continue at the helm to ensure that this premier Blues Foundation event is planned and executed with her usual attention to detail." www.blues.org



This month's recommended listening by Brad Wheeler, music writer for the Globe and Mail
Twitter: @bwheelerglobe

- *Crystal Shawanda *Church House Blues* True North
- Robert Cray Band *That's What I Heard* Nozzle
- *Sass Jordan *Rebel Moon Blues* Stony Plain
- Roomful of Blue *In a Roomful Of Blues* Alligator
- *Layla Zoe *Retrospective Tour 2019* self-released
- James Hunter *Six Nick of Time* Daptone
- *Jackie Washington *The World of Jackie Washington* Borealis
- Philip Sayce *Spirit Rising* Warner (Our April 24)
- Bernard Allison *Songs from the Road* Ruf
- Swamp Dogg *Sorry You Couldn't Make It* Joyful Noise
- *The Soul Motivators *Do The Damn Thing* Do Right Music
- Bernard Allison *Songs From The Road* Ruf
- The Paul Butterfield Blues Band *Live At Woodstock* Run Out Groove
- Bai Kamara Jr. *Salone* MIG
- Marcus King *El Dorado* Fantasy
- Christone "Kingfish" Ingram *Kingfish* Alligator
- *Big Dave McLean *Pocket Full of Nothin'* Black Hen
- *Dalannah Gail Bowen *Looking Back* Quest
- Albert Cummings *Believe* Provogue
- *Harpdog Brown *For Love & Money* Dog House
- *Wide Mouth Mason *I Wanna Go with You* We Are Busy Bodies



34th Annual FMO Conference
September 25-27, 2020
Doubletree by Hilton Hotel London

OPEN NOW:
Members only early-bird registration
Showcase Applications (FREE for 2020!)
Awards Applications
Hotel Reservations

www.folkmusicontario.ca
1-866-292-6233





The Toronto Blues Society is a Registered Charity

Make a donation beyond membership and merchandise, and get your charitable tax receipt in time for this year! (Charitable # 87487 7509 RR0001). You will be helping to support events like the annual Women's Blues Revue, The Blues in the Schools program, numerous workshops and career development activities for the musician community as well as the Maple Blues Awards and the Blues Summit conference, the most important blues industry gathering in Canada that occurs every other year. Networking events within this conference allow for industry discussion alongside artist discovery through the showcase program.



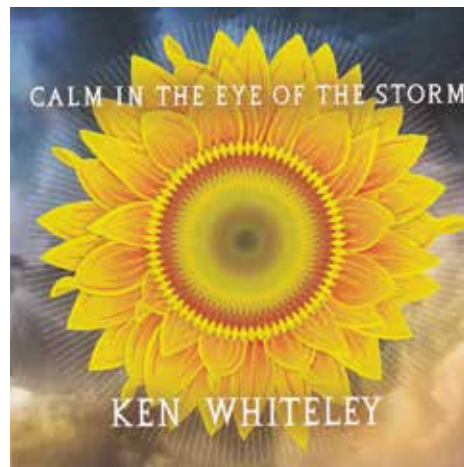
Illustration by Nathaniel Mesner



Crystal Shawanda *Church House Blues*
True North

Crystal Shawanda is from the Wikwemikong reserve on Manitoulin Island although she has lived in Nashville for several years now. With husband **Dewayne Strobel** on guitars & production and Crystal on powerhouse vocals & songwriting, they make for quite a couple and they have outdone themselves on this new one. The title song opens and it's an immediate highlight equating the roadhouse they played in on Saturday night with their church service Sunday morning. Written with Nashville songwriters **David Norris & Lowell Gaines**, this song shows how both rock, even if in their own way. Old friend **Dana Robbins** is on sax. "Evil Memory" is a fine slow blues, a non-original, her partner has left leaving only an 'evil memory' - a line that resonates. Slightly faster but on the same theme, she sings that the magic is gone, she'd "Rather Be Alone." A nice change of pace is the tuneful rocker "Hey Love". It's a change of pace too in that it's about a love returning. The chorus, which includes the **McCrary Sisters & Quisha Wint**, adds immensely to this one. "Blame It on The Sugar" is an almost rockabilly tune about being attracted to a new-found beau to be. A well-written piece of advice is "Bigger Than the Blues": when you realize you have it within you to rise above your troubles, you're bigger than the blues. I've always thought that **The Tragically Hip's** great hit "New Orleans is Sinking" was a prime candidate for a deep blues version. It's taken a little while for that to happen but Crystal does a great job with twin acoustic slides from Dewayne and very good harp from longtime sideman **Stephen Hanner**. A stunning way to end. Her last

album was a tribute to her influences, with only a couple of new songs, clearly they were working towards this magnum opus. The web site is www.crystalshawanda.com.



Ken Whiteley *Calm in the Eye of the Storm*
Borealis

In some ways, **Ken Whiteley's** new album is not a surprise in that it contains his usual blend of personal, political and spiritual songs. He also continues to bring along some remarkable guests to help out. He has however come up with some brilliant new songs and he's singing very well indeed. He's chosen this time as well to play a great deal of slide guitar. "Lay My Burden by The River" brings back memories of a trip to the Himalayas over some lovely fingerpicking and son **Ben Whiteley's** string bass. The title song is a lovely ballad to his wife **Ellen Jane Lewis & Eve Goldberg** provide harmony vocals and Ken adds mandolin. Ken met blues mandolin player **Yank Rachell** at Mariposa. At this late stage in his career, Yank told Ken he no longer tuned his mandolin in the standard way but to how he felt that day, the uplifting "Tune Me Up" is the result of that memory. Ken is on resophonic guitar & mandolin with the **Fabulous Levy Sisters**. An ambitious, if slightly older, song features the large band Ken brought to the Blues Summit Showcase a couple of years ago. "I Hear the Wind" is dedicated to refugees around the world. It was a showstopper then and it still is. "Stephen's Last Game" is the heartbreaking tale of a mother who has to tell her son that they are about to be deported from their home in Iowa, thanks to the harsh new immigration laws there. Two traditional gospel tunes feature the great lap steel player **Nikki D. Brown** & her sisters who were Ken's guests at his gospel brunch at Hugh's Room last year. "You Better Mind" gets some new lyrics from Ken and "King's Highway" dates back to the **Original Sloth Band** days - both wonderful new performances. He

was planning on touring to support this new album but that's not going to happen for a while. Find out when at www.kenwhiteley.com.



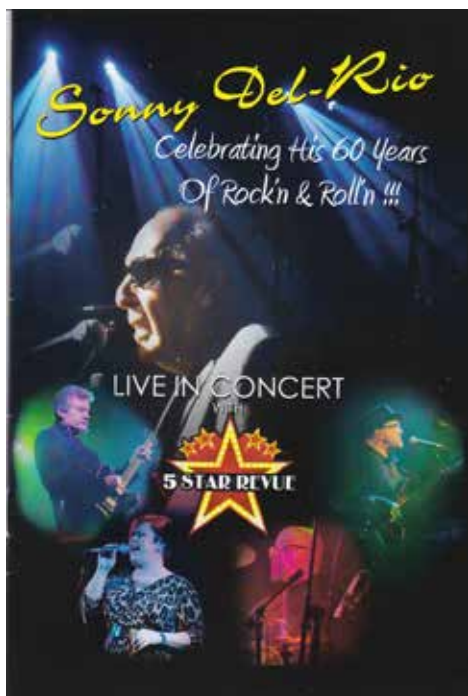
Sandra Bouza *Falling Away from Me*
Sabucedo

Sandra Bouza was our Talent Search winner this past year and the winner of our playoff to head to Memphis for the International Blues Challenge in January where she reached the semi-finals. She released a couple of songs during this time and now we have a full album. Her glorious voice is supported by sturdy rhythm guitar and swirling keyboards plus bass & drums as she sings at some length about failed relationships with brutal honesty and deep insights. She sings in the last song, hers are all 'wrong songs': "Almost Love" deals matter-of-factly with a rejected partner who wasn't quite right. The "Stone Junction" is where two jaded lovers continue to meet, and return to, as equals. "Turn It Up" is faster, two people meet on the dance floor, perhaps not for the first time. "Human Connection" addresses head-on her need for companionship. In "East Side Woman" this attraction is to another woman, reluctantly. As a style of music, Sandra Bouza sings in a more contemporary R&B/Soul style but that wonderful blues voice can sing more traditional blues very well indeed as those of us at the IBC playoffs heard in her version of **Elmore James' "One Way Out"**. On an album of excellent original material, it would seem that this performance was not required. The web site is www.sandrabouza.com, and it has several videos for you to enjoy. You can listen to the album there as well.

Sonny del Rio *An evening with Sonny Del-Rio Celebrating his 60 Years of Rockin' and Rollin' on...2 DVD* Q.E.D. Media

Saxophone legend **Sonny Del Rio** aka

Dennis Grasley, has long been a fixture of the Hamilton music scene, most prominently as a member of **Crowbar** and of **King Biscuit Boy's** bands. To celebrate his 60 years in the business, he assembled his **5 Star Revue** for an attractive concert video. Sonny handles most of the vocals with **Catherine Goodrick** on vocals & BG vocals, **Dan Thomas** on lead guitar, vocals & BG vocals; **Jason**



Colavecchia on the 6 string fretless bass, vocals & BG vocals and **Robin Houston** on drums. Director **David Beatty** invited an audience to the studio to create a nightclub setting around his four cameras. On the second disc, we get a lengthy interview of his career, which featured an eight-year stint with **Ray Materick** and a later edition of **Crowbar**, which included **Kelly Jay & Richard Newell**. He and Richard worked together for forty years, with Richard appearing on all his albums and Sonny on most of Richard's. The album *Two Hounds Blues* contains Richard's last recording, the duet title song. Over the course of his sixty years, Sonny has released six albums and the concert draws on three of them while also acknowledging his time spent in cover bands in Hamilton. This results in a goodly selection of radio hits that also give the talented band members some solo time. From his own albums, we get "Crazy Street" from *Welcome to Saxland*, with the vocal by Catherine and "Treat Your Baby Right" "Say You Will" and as an encore, the rocking "Birthday Suit" from *40 Years of Rock & Roll* and *All I've Got's the Blues*. We also get a fine version of "Two Hound Blues". This DVD set is a welcome acknowledgement of a vital member of the local scene in Hamilton. A trailer for the DVD is on YouTube and his web site is www.sonnydelrio.com.

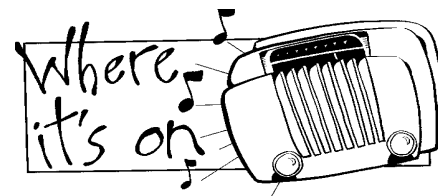
Watermelon Slim Traveling Man NorthernBlues/Red House

Straight, no chaser. That's what we get from **Watermelon Slim** here. **Bill Holman** has been a most impressive presence since **Fred Litwin's** NorthernBlues Records introduced him all those years ago. Litwin knows a good thing and has stuck with him ever since. He is the only artist on the label now. His past has always been something of a mystery but since his introduction he has released albums with a working band, duo albums and albums with carefully selected accompanists. Originally from Norman, Oklahoma, he has resided for years in Clarksdale MS, occasionally guesting on sessions, including a couple for **Sunday Wilde**. He went back to Oklahoma for these



shows recorded a couple of years ago with just his National Steel and his harps. You'll be as amazed as I was at the inventiveness of his playing and the quality of his vocals. He has several new songs and a nice number of old ones. He clearly has fond memories of his days as a truck driver: "Blue Freightliner", the first single "Scalemaster Blues", "300 Miles" and "Truck Driving Songs" are standouts. His always interesting takes on traditional songs are represented by the medley of "Smokestack Lightning/Two Trains Running", "Frisco Line", "John Henry", "61 Highway Blues" and his masterpiece from *Church of the Blues*, "Holler #4". "Jimmy Bell" is one he found on an old Folkways recording by **Cat Iron**. Originally on *The Wheel Man*, this vocal with harmonica sounds even better here. "Northern Blues" is his tale of suffering through winter, from his Winnipeg album *Golden Boy*. Other highlights are his "The Last Blues", a brutally honest look at his mortality and "Oklahoma Blues", a very early song of his. The highlights continue with "Let It Be in Memphis", a tribute to a blues centre in the past and the future. We cannot experience live blues currently but we can do so virtually with one of the finest bluesmen around. His web site is www.watermelonslim.com.

- John Valenteyn



CBC Radio One (99.1)
Saturday Night Blues,
w/ **Holger Petersen** (national)
Saturday 9:05pm-11:00pm
(on Radio 2 Saturday at 6:05pm),



JAZZ-FM (91.1)
Bluz FM w/ **Danny Marks**
Saturday 8:00 pm-midnight



CIUT-FM (89.5)
A to Z Blues w/ **Screamin' Red**
Tuesday 6-7pm
John Valenteyn's Blues
w/ **John Valenteyn**
Friday 1-2pm



At The Crossroads w/ **Brant Zwicker**
<http://atcblues.ca> and syndicated on
stations across the continent)

CKWR (98.5 FM)
Old Chicago Blues w/ **Willy A**,
Saturday 12:30pm - 2:00pm (Kitchener)
www.ckwr.com



CIOI FM (101.5 The HAWK)
Blues Blast, with **Ken Wallis**
Tuesdays, 4-6pm (Hamilton)



COUNTYFM (99.3)
Sideroads with **Blues Sister Peg** and
Brotha 'Z' Tuesday 8-10pm (Picton)



CIWS 102.9FM (WhiStle Radio)
Whistle Bait w/ **Gary Tate**
(aka Shakey-T) Sat 12-1am and Wed
10-11 pm. (Stouffville)



CHFF Trent Radio (92.7 FM)
Blues Themes, Delivered by...The Milkman.
Every Thursday night 9 to 10 PM

CJLX (91.3 FM)
Saturday Night Blues Review, with **George Vaughan**.
Saturday 6-7pm (Belleville)

CFMU (99.3 FM)
Breakfast of Champions, with **Paul Panchezak**. Thurs 10am
Swear to Tell the Truth: the Blues and Rhythm Show, with
C.M.Compton. Tuesday 1-2:30pm (Hamilton)

CFRU (93.3 FM)
The Thrill is Back with **Andy and Andrew** Mondays 1 to 3pm
The Blues Review, with **Roopen Majithia** Tues 9:00 pm (Guelph)

CANOE FM (100.9 FM) canoe.fm.com
Buckslide Blues Cruise with Patrick Monaghan Tues. (7-9pm)
(Haliburton)

CFBU (103.7 FM) *Eclectic Blues* with **Deborah Cartmer**
Tuesday 7-9 pm (St. Catharines)

CKCU (93.1 FM) www.ckcufm.com *Black and Blues* w/ **John Tackaberry** Every Sunday 9-11 pm (Ottawa)

CKMS (100.3 FM)
Poor Folk Blues w/ **Bruce Hall** (aka Brewski)
Monday 7:30-9 pm (Waterloo)

RESOURCES FOR OUT-OF-WORK MUSICIANS

Financial assistance for media, marketing, and communications pros <https://nabs.org/need-help>.

Emergency financial aid for entertainment pros - <https://afchelps.ca/get-help/>.

Financial aid for musicians <https://unisonfund.ca/services/financial-assistance>.

The Unison Benevolent Fund has also a list of resources available to musicians <https://www.unisonfund.ca/blog/post/covid-19-resources-music-community>.

Emergency financial aid for LGBTQ2S artists, performers, tip-based workers <https://www.gladdaylit.ca>.

Artist/Musician Relief Fund https://www.gofundme.com/f/canadian-lowincome-artistfreelancer-relief-fund?utm_medium=copy_link&utm_source=customer&utm_campaign=p_lico+share-sheet.

Akin accepting applications for rent relief from current Akin artists and creatives <https://www.akincollective.com/rentrelief>.

In partnership with Facebook Canada, and Slight Music: artists can apply for a \$1,000 grant to support a 45- to 60-minute live stream performance planned between March 19 and 31 on the NAC's Facebook page.

https://ottawacitizen.com/entertainment/local-arts/nac-unveils-100000-relief-initiative-for-performing-artists/?utm_medium=Social&utm_source=Facebook&fbclid=IwAR11dhBh-is8YEnqPI1co-ilA3RdiCRwt7ACPqh4f3ykXXQyzCwUOxaBfQ.

Music Industry Relief Program out <https://unisonfund.ca/>.

FACTOR has announced that artists who received funding to travel for shows that have been cancelled can keep the money <https://www.factor.ca/covid-19-update-cancellation-policy/>.

Canada Council for the Arts: Information about CCA's cancellation policy can be found at <https://canadacouncil.ca/covid-19-information>.

Toronto Musicians Association's resources for financial assistance and bill <https://www.tma149.ca/2016-01-26-02-05-12/press-releases/349-coronavirus-information-for-tma149-members>.

Music Managers Forum Canada's constantly updated resource page <https://mmfcanada.ca/news/2020/3/12/covid-19-updates>.

Airline Cancellation Policies: A comprehensive guide by Forbes can be found at <https://www.forbes.com/sites/advisor/2020/03/26/master-list-of-all-major-international-airline-coronavirus-change-and-cancellation-policies/>

Nightly 60-second clip of tips by music publicist Eric Alper during pandemic will be available at www.thatericalper.com

If you are using Facebook, we highly recommend joining the group "I Lost My Gig" for immediate updates and as a platform for sharing. <https://www.facebook.com/groups/ILostMyGigCa/>.

IN A ROOMFUL OF BLUES

"BRAWNY SHUFFLES, SWINGING HORNS, SEARING GUITAR, PASSIONATE VOCALS AND BALLS-TO-THE-WALL ENTHUSIASM" -LIVING BLUES

AVAILABLE AT ALLIGATOR.COM AND OTHER FINE RETAILERS. GENUINE HOUSE ROCKIN' MUSIC SINCE 1971.

TAKE CARE AND STAY IN TOUCH



[www.facebook.com/
TorontoBluesSociety](http://www.facebook.com/TorontoBluesSociety)



@TObluessociety



@torontobluessociety

Erin McCallum

International Award Winning Songwriter

2X Maple Blues Award nominee

Big Voice. Big Sound.

www.erinmccallum.com

SILVERBIRCH PRODUCTIONS

MASTERING MANUFACTURING DESIGN

Mastering: Award winning engineer + world-class mastering studio + traditional outboard gear (Manley, Requisite, TC 6000, TubeTech, Weiss, etc.) + Lavry Gold conversion = major label quality at affordable prices!

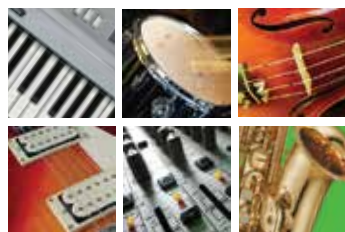
Replication: The ONE-STOP-SHOP for all your music needs: CDs (manufactured & short-run), Online Store (uploads to iTunes, etc.), Graphic Design, Posters, Website Design/Hosting, and more!

CUSTOMER SATISFACTION IS OUR HIGHEST PRIORITY

416.260.6688 www.silverbirchprod.com

Penguin Eggs
North America's Preeminent
Folk/Roots Magazine

Try the
Current Digital Edition for Free
or Subscribe at WWW.penguineggs.ab.ca



Where the
Music
Begins

Sales / Rentals / Repairs / Print Music / Lessons / In-Store Financing



Long & McQuade
MUSICAL INSTRUMENTS

www.long-mcquade.com

8 locations in the GTA, including 925 Bloor St. W. Toronto, 416.588.7886



PRIMERICA

LITTLE OR NO SAVINGS?
TOO LITTLE PROTECTION?
SHRINKING INCOME?
KNOW WHEN YOU'LL BE DEBT-FREE?

**WE HAVE THE SOLUTIONS TO YOUR
FINANCIAL PROBLEMS!**

Louie Simone – Representative
416-497-7077

Life Insurance offered by Primerica Life Insurance Company of Canada

Louie is proud to be a charter TBS member



Jeffrey Wilson, Proprietor

WILSON
Music Services

Sales & Service of HOHNER Harmonicas & Accordions ~ Since 1986~

P.O. Box 330, 750 Lowell Ave.
Newmarket, Ontario L3Y 4X7

Phone/Fax: (905) 853-5082
www.wilsonmusic.ca
Email: dr.harp@rogers.com

A large background image of Crystal Shawanda wearing a red fedora and a black leather jacket, looking off to the side. The text is overlaid on this image.

CRYSTAL SHAWANDA

Church House Blues



Evoking the spirit and strength of Koko Taylor and the contemporary delivery of Beth Hart, *Church House Blues* showcases one of the most powerful new voices in the Blues.

AVAILABLE APRIL 17



Canada truenorthrecords.com